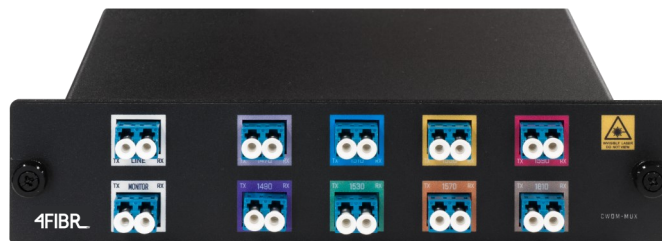
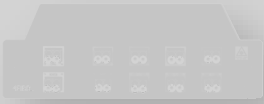


# 4FIBR

## Eight Channels - One Fiber

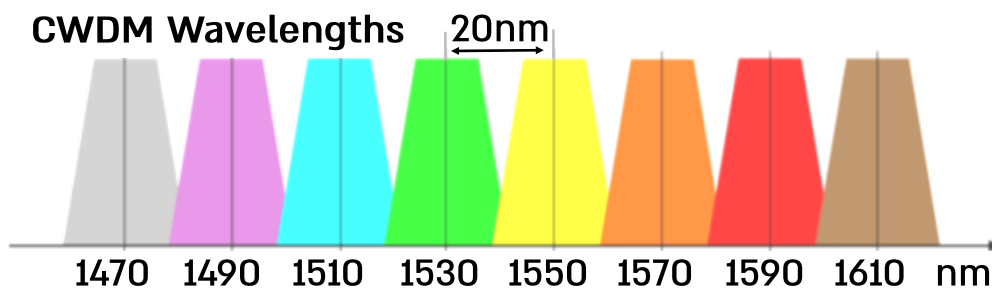


The 4FIBR CWDM solution allows the single-mode fiber to transmit up to eight 10Gbps channels. CWDM separate the data channels using multiplexer of different wavelengths into one optic thread. The 4FIBR CWDM unit is a passive Fanless unit that does not require a power source.



## Overview

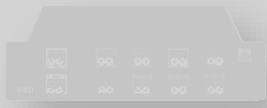
The CWDM point to point optic solution increases the capacity of an existing single fiber up to eight simultaneous channels (wavelengths) over the same fiber installation. There are eight wavelengths used by CWDM implementations from 1270nm to 1610nm with 20nm (ITU-T G.694.2)



## SFP\SFP+ transceivers



CWDM wavelengths: 1610 nm, 1590 nm, 1570 nm, 1550 nm, 1530 nm, 1510 nm, 1490 nm, 1470 nm, are available. Modules: SFP or SFP+

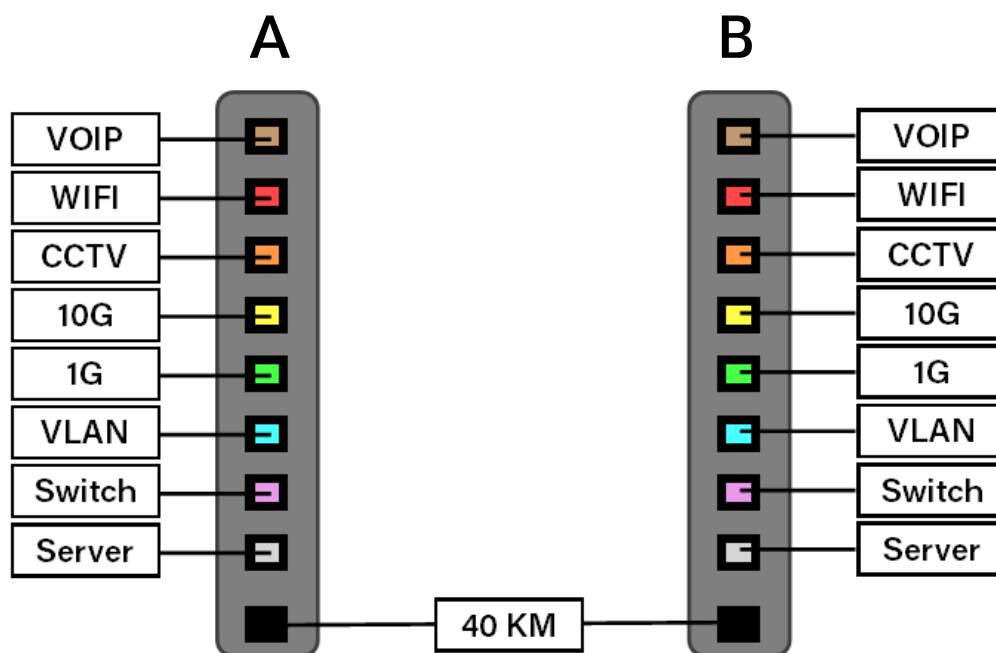


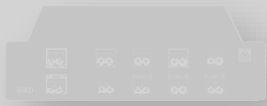
## Overview

The diagram shows how the CWDM expands the fiber capacity. Site-A and site-B connect with one optical fiber, but more data channels required between the sites. CWDM can increase the capacity of the existing fiber by multiplexing different wavelengths over the same thread.

CWDM supports up to eight channels (1470 nm to 1610 nm) of 10Gbps over single-mode fiber up to 10 Km and 1.25Gbps over single-mode fiber up to 40 Km.

4FIBR CDWM is a passive device with no need for a power source. Each SFP\SFP+ is connected to a corresponding unit with the same color on both sides. 4FIBR CWDM is ideal for metro, campus, or a building with limited fiber installation.





## Specifications: 4FIBR-CWDM-SB8

Conformance	ITU-T G.694.2
Regulatory Compliances	UL, CE, FCC Class A, RoHS2 (6/6), WEEE, REACH
Ports	8 Channels: LC (UPC)
Temperature	0 to 60°C
MTBF (hrs)	> 1,000,000
Dimensions (HxWxD)	50X300x250 m"m
Weight	250g
Warranty	One (1) year

The equipment must be disposed of in accordance with Directive 2002/96/EC. The disposal must follow national laws for IT and Telecommunication equipment (1) Do not dispose waste equipment with unsorted municipal and household waste. (2) Collect equipment waste separately. equipment must be collected separately from other types of waste.



Specifications are subject to change. 4fibr products are sold with a limited warranty. The limited warranty requires the use of arbitration to resolve disputes on an individual basis and where applicable.

©-2020 4fibr. All rights reserved.

All other trademarks are the property of their respective owners.

ALL PRODUCT, PRODUCT SPECIFICATIONS AND DATA ARE SUBJECT TO CHANGE WITHOUT NOTICE TO IMPROVE RELIABILITY, FUNCTION OR DESIGN OR OTHERWISE